

Plans for string top

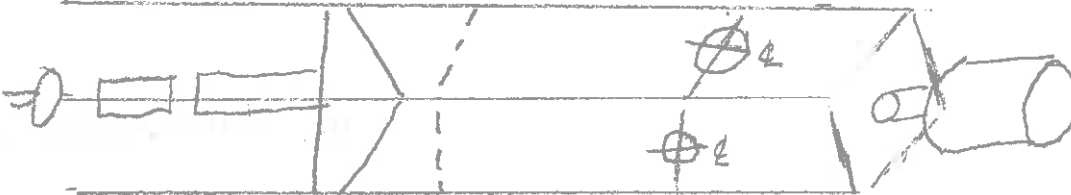
Plans for String Top

1. I cut blank 2 1/2-2 1/2 square. Make blank long enough for handle, top,

string handle, button, about 14".

2. Layout top handle for drilling about 1 1/2" from end. Drill center line 7/8" all the

way through blank. Drill with 1/2" half way through.

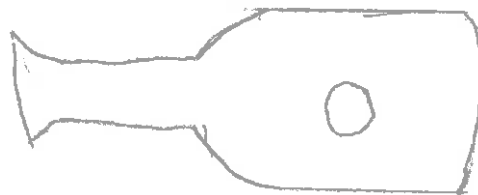


3. Sand holes with drimel.

4. Cut top handle off blank about 5 1/2".

5. Drill for wine stopper chuck.

6. Turn Handle.

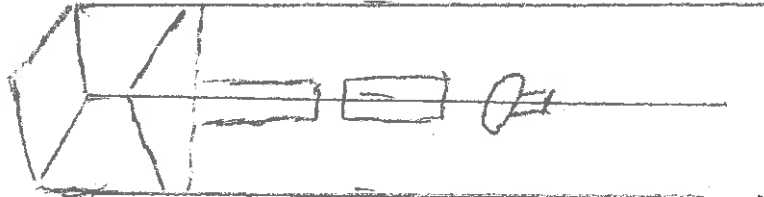


7. Sand and Finish.

8. I use friction polish.

Plans for string top

9. Lay out rest of blank.



10. Turn top, string handle, make sure to turn spindle on top at least $1/4$ " less than $7/8$ "

hole in handle.

11. Sand and finish.

12. Cut top spindle the depth of top handle use rest of spindle for string handle, finish ends.

13. Put spindle top through top handle, mark spindle center line small hole.

14. Drill spindle of top and string handle with hole a little larger than strings.

15. Turn button, sand and finish.

Put together, wind and spin.